



Overview – SWE Membership and Structure



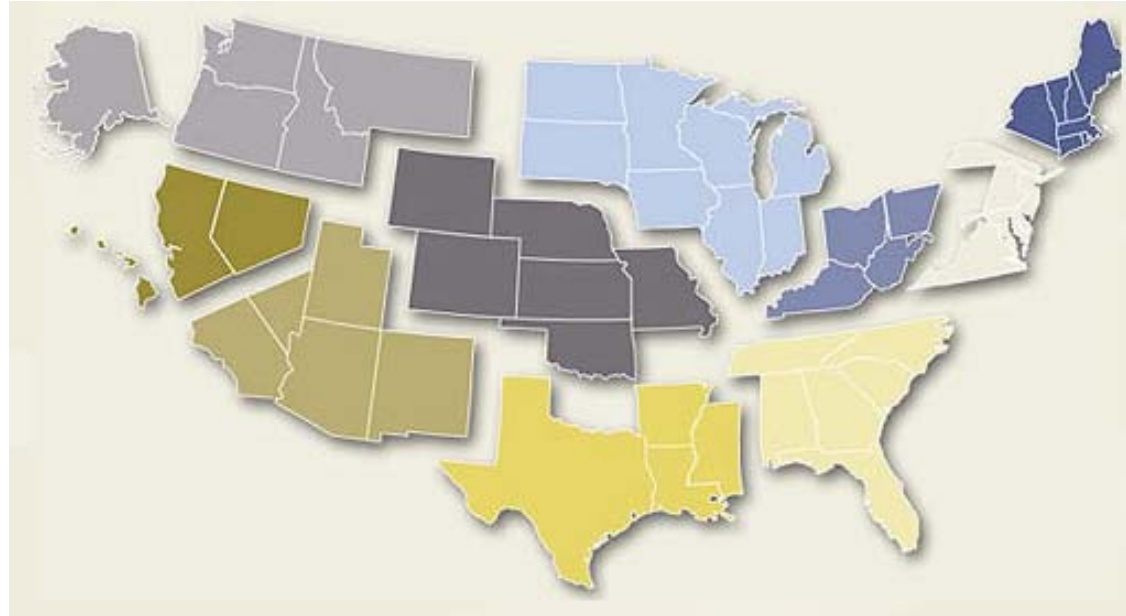
Society of
Women Engineers

ASPIRE • ADVANCE • ACHIEVE

Important Details on SWE Membership

- SWE's Fiscal Year is July 1 – June 30
 - Membership is for 1 Fiscal Year and is \$100 for employed professional members
 - After Jan 1, the cost of membership is reduced by 50%
- You will receive a membership ID which has your name followed by some numbers – this ID will be required for registration with online webinars and the SWE Community Website
- You will join the local section (Central Illinois H009) when you register online for National Membership
 - Our section will receive part of your National Dues – we do not charge any additional membership fee for our section
- Contact SWE's headquarters if you have any questions during registration at (312) 596-5252 or 1-877-SWE-INFO.

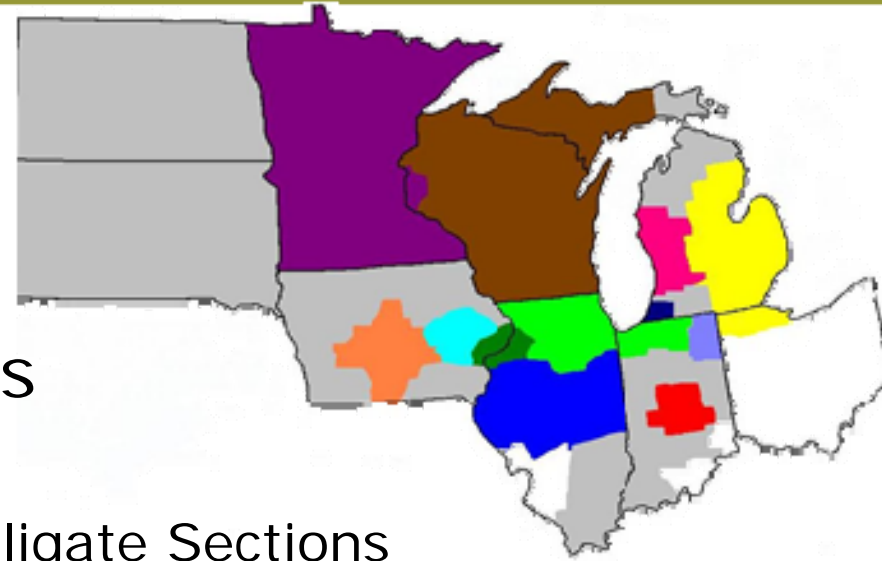
⚙️ SWE is Divided Into Regions Across the US



- Each Region has a governing body
- The Central Illinois Section is in Region H (Heartland Region) and our number is H009
- Region H website: <http://www.swe.org/regionh/>

⚙️ Each Region Has Sections

- Each Region has Colligate and Professional Sections
- SWE-CI geographically overlaps with Colligate Sections at Bradley and U of IL
 - The Professional Sections support Colligate Sections by sending speakers for membership meetings, upgrade events, and general mentorship and networking.
- Members that live in the grey areas of the map are called Members At Large, or MALs



Central Illinois Section of the Society of Women Engineers

SWE-CI (H009)



Society of
Women Engineers

ASPIRE • ADVANCE • ACHIEVE

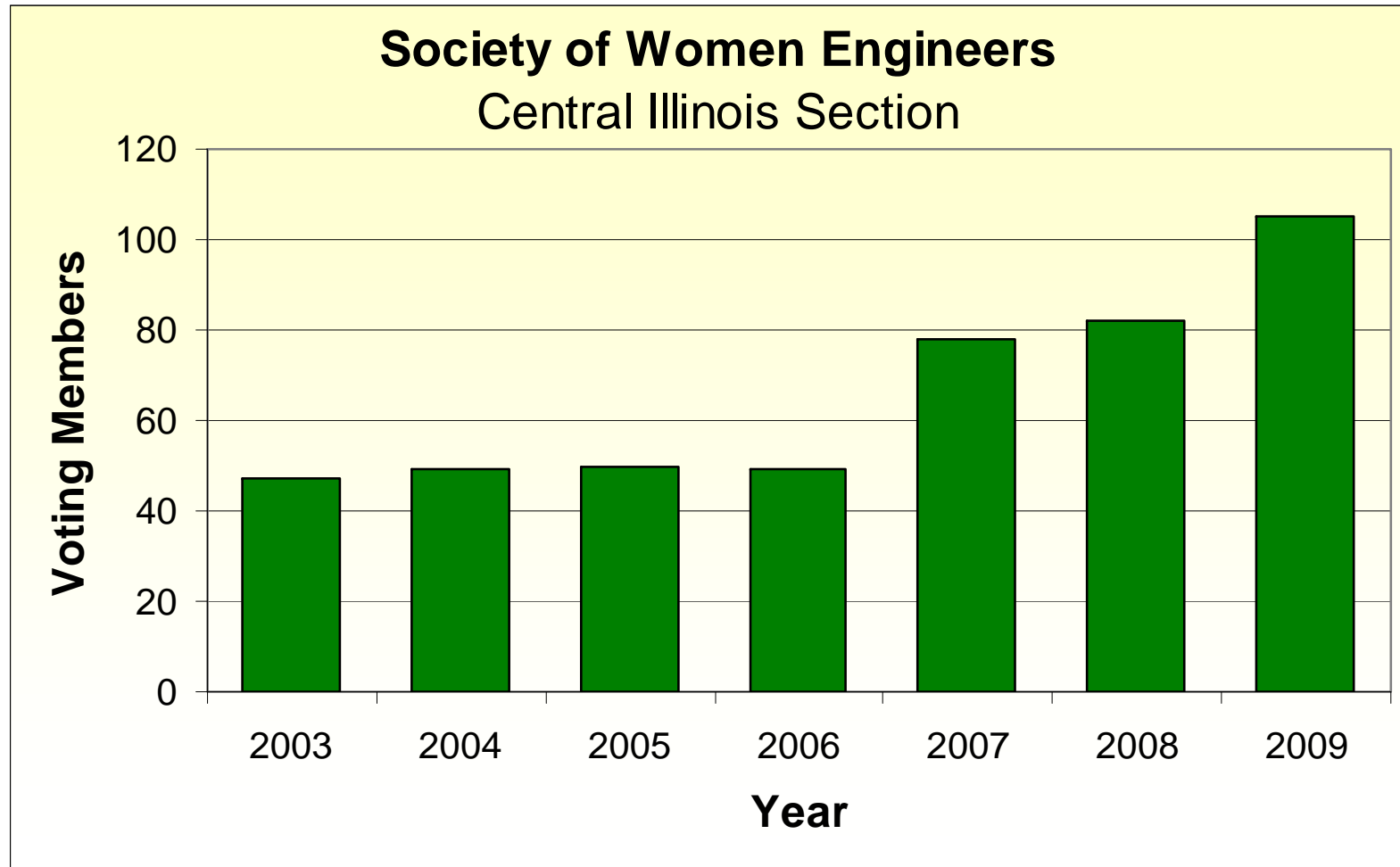


Central Illinois Section of SWE (SWE-CI)

- SWE-CI Important Links:
 - Section website: www.swe.org/centralillinois/
 - Committee information, Google calendar, member news, etc.
 - Email: swe.central.illinois@swe.org
 - Listserve owner, Google calendar owner
 - Facebook group page:
<http://www.facebook.com/group.php?gid=138273795496&ref=ts>
 - Post events, photos, informal communications/networking
 - SWE Community website:
<http://communities.swe.org/COP/CentralIllinoisSWE/>
 - Shared documents (i.e.: Executive Committee meeting minutes, budget, etc.)
 - Requires National SWE member ID to access



Central Illinois Section of SWE (SWE-CI)

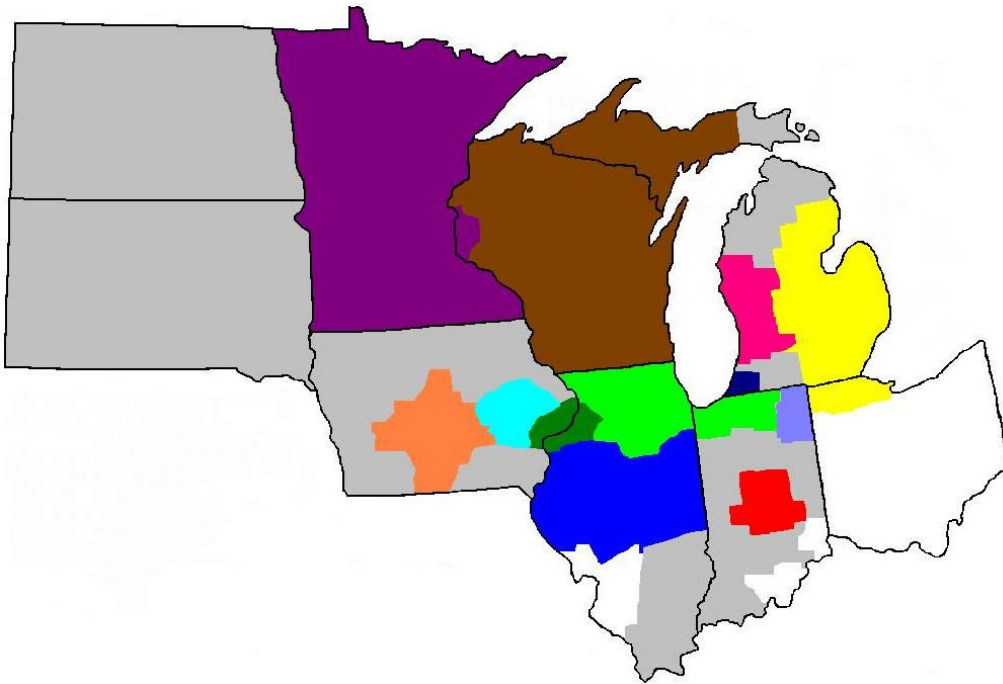


SWE-CI became a “Large Section” with over 100 professional members in 2009. The section has maintained this status in 2010.

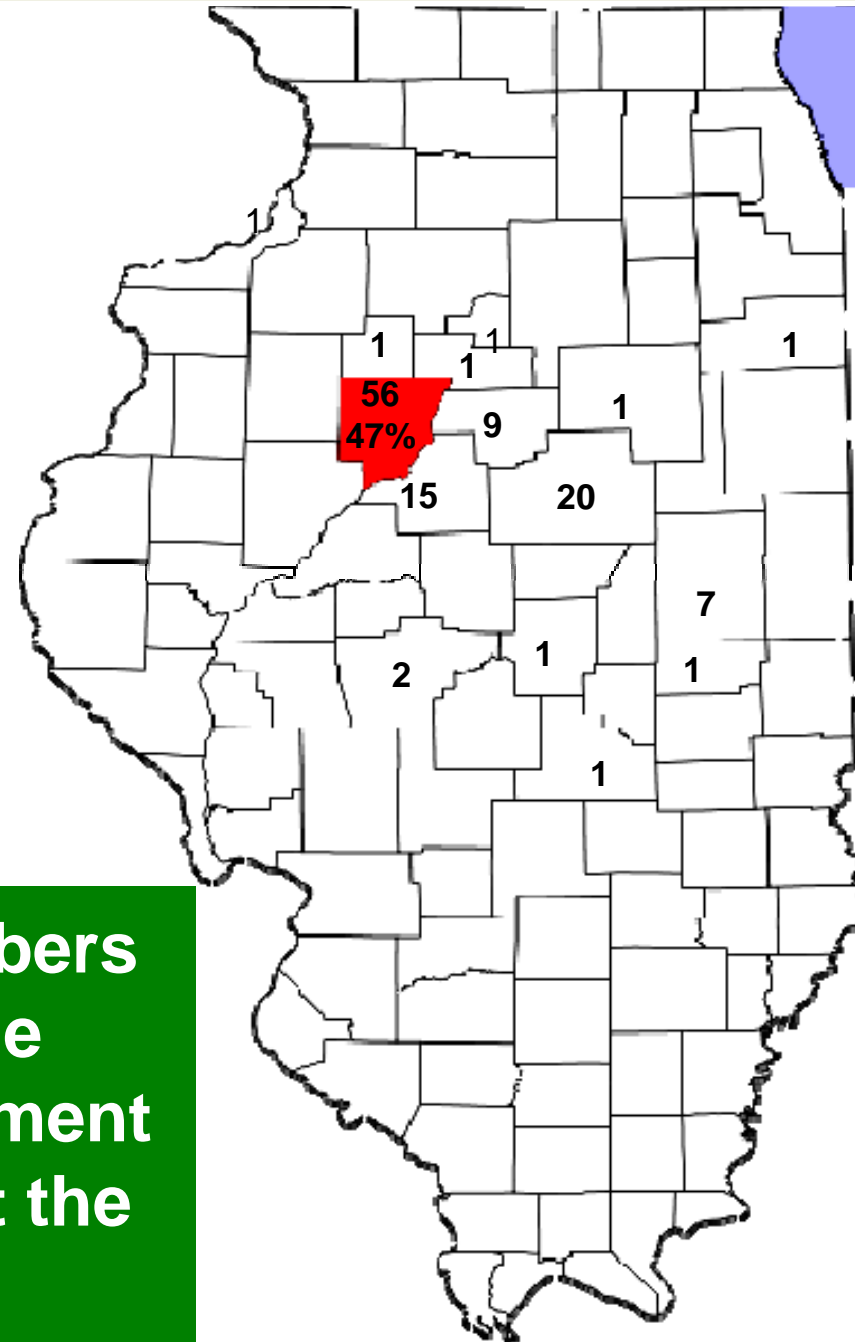
SWE-CI Professional Section



Membership Demographics - 2008

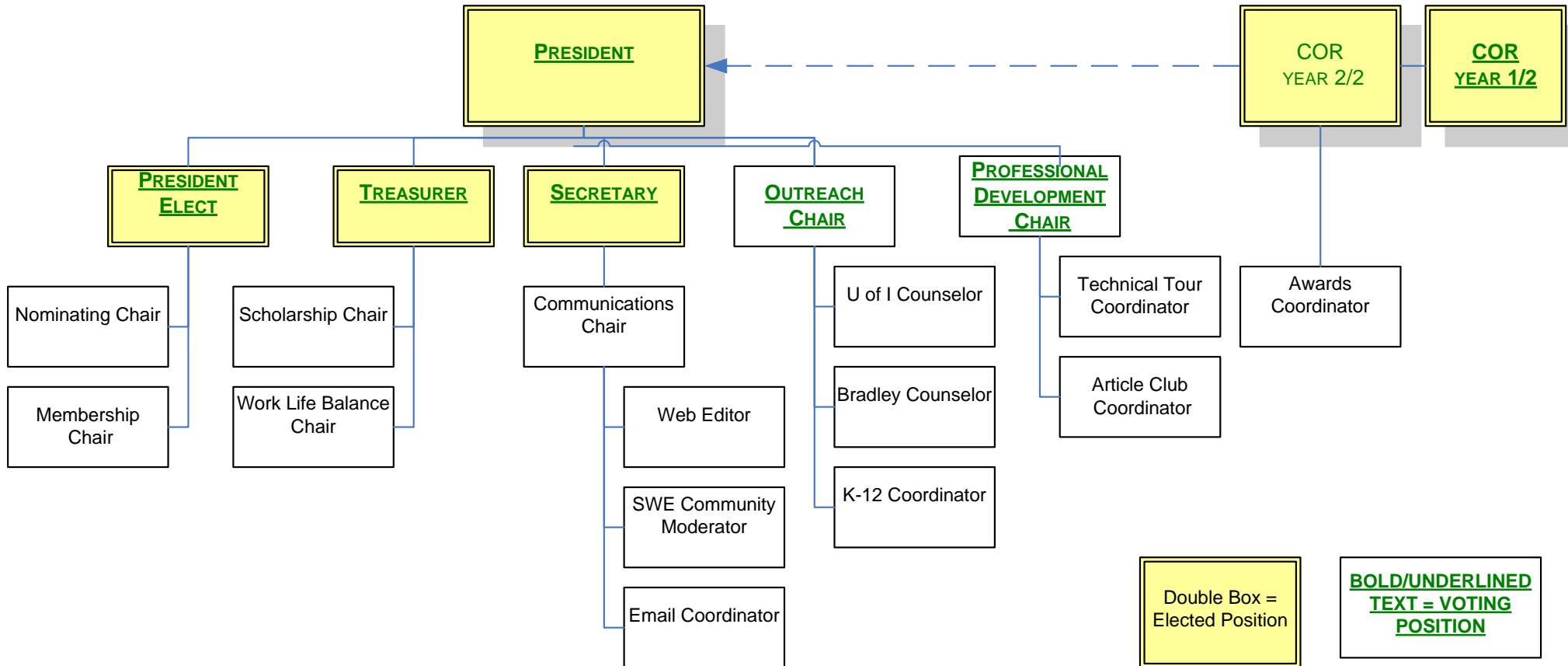


 **Central Illinois Section**



SWE-CI includes professional members from a wide geographic area. The section hosts Professional Development events in multiple locations to meet the memberships needs.

SWE-CI Organization



Purpose of Organization Chart is to use for succession planning and to temporarily fill open positions

SWE-CI Committees

- Professional Development (PD): strive to provide formal and informal networking opportunities. Our goals reflect a concerted effort to help our colleagues learn and grow, both in their careers and in their personal lives.
 - Goal: Plan and execute at least four PD presentations with a unifying theme, perform at least three technical tours of local industry, and host at least two article club discussions. Ensure that at least three PD events are held in the Bloomington-Normal area and one PD event in the Decatur area. Jointly hold at least one PD presentation with another local professional society with similar diversity goals/mission.
- Work Life Balance (WLB): provide social opportunities for SWE members to network and learn WLB topics. WLB events are often welcome the attendance of a members entire family.
 - Goal: Host annual New Years Brunch and at least two other social WLB functions.
- Outreach: provide outreach programs to K-12 grades, focusing on Engineering, Math, and Science activities.
 - Goal: Host at least one E-Week outreach event and participate in a K-12 education mentorship program.

SWE-CI Committees, Cont.

- Membership: focus on attracting and retaining members of Central Illinois SWE.
 - Goal: Plan and execute at least two membership recruitment events.
- Scholarship: administer the SWE Central Illinois Section scholarship. This work includes communicating that the scholarship is available, compiling applicants information, selecting the scholarship recipients, and awarding the scholarships.
- Nominating: coordinate the elections and appointments for the Executive Board each Spring.
- Communication: provide timely and accurate information to members and friends regarding SWE-Central Illinois activities and events via two avenues: the website and email.
 - Goal: Establish and utilize Google calendar.

How to Apply On-line

SWE Membership

How to Join SWE Online

1. Go to the National SWE website:
www.swe.org
2. Click "Join SWE Now!" in the top left hand corner



How to Join SWE Online

3. Click “Join SWE Now!”



The screenshot shows a web interface with a navigation bar at the top right containing icons for PDF, a printer, and an envelope. Below the navigation bar, there are two buttons: a dark grey button labeled "Join SWE Now!" which is highlighted with a red rectangular box, and a blue button labeled "Online Application" with a mouse cursor icon. Below the buttons, there is a section titled "Why Join SWE?" followed by a paragraph of text.

Join SWE Now!

Online Application

Why Join SWE?

When you join SWE you're joining more than an organization—you're joining a movement toward equality and opportunity for women in engineering. Our mission is focused but our impact is vast. We provide the resources you need whether you are beginning, resuming, or building your career. We also encourage creative and intelligent girls at an early age to explore the field of engineering. Through such career development and awareness, we are making significant strides—together.

How to Join SWE Online

4. Click “JOIN SWE!” on the log-in window (if you have been a member of SWE in the past, you will need to log-in at this window to renew your membership. If you have forgotten your user name or password, click “Forgot your username/password?”)

Please login below with your username and password.

User Name:

Password:

[Forgot Password?](#)
[New Customer? Click here](#)

JOIN SWE!

How to Join SWE Online

5. Complete your contact information.
(Consider showing your name and email address in the on-line directory at a minimum. This directory is used by the local chapter to publish upcoming events and networking.)

SWE On-Line Member Directory Preferences

You may completely exclude your profile from the On-Line Member Directory if necessary. SWE hopes its members use this only as needed. Only SWE Members have access to the On-Line Member Directory. Leadership within SWE does have access to suppressed or excluded data and is required to maintain your privacy requests.

Exclude me from the on-line directory
 Exclude me from the online directory.

Suppress mailing address
Do not show my mailing address in the online directory
 Do not show my mailing address in the online directory

Suppress phone number
Do not show my phone number in the online directory
 Do not show my phone number in the online directory

Suppress email address
Do not show my email address in the online directory
 Do not show my email address in the online directory

How to Join SWE Online

6. The personal and educational information can be updated at any point online. It is not necessary to complete all of this during registration for membership.
7. If you have a technical degree in engineering, you do not need a sponsor so the last section can be left blank.
8. Click Submit.